



FKK Group was founded in 1957 in Samsun Turkey. Since then FKK Group has become the world' s leading spare parts manufacturer for automotive, mining, industrial equipment and construction industries. FKK has 4 production plants, in Samsun, Corum and Istanbul.

FKK manufacture and supply elastomer parts to the mining industry from Vulkollan, rubber and polyurethane materials. Our diversity brings to us and our customer wide product range.



Welcome
FKK Material Handling

INDEX

1	FKK Quality
2	Costumers Satisfaction
3	Vulkollan Advantanges
5	Drive Wheels
13	Load Wheels
17	Stabilising Wheels
25	Press On Band
26	Roller Plastic Cap
30	Stabilising Wheel Assembly
40	Load Wheel Assembly
44	Spare Parts
48	Gas Spring
54	Brake Shoes
56	Battery Sockets





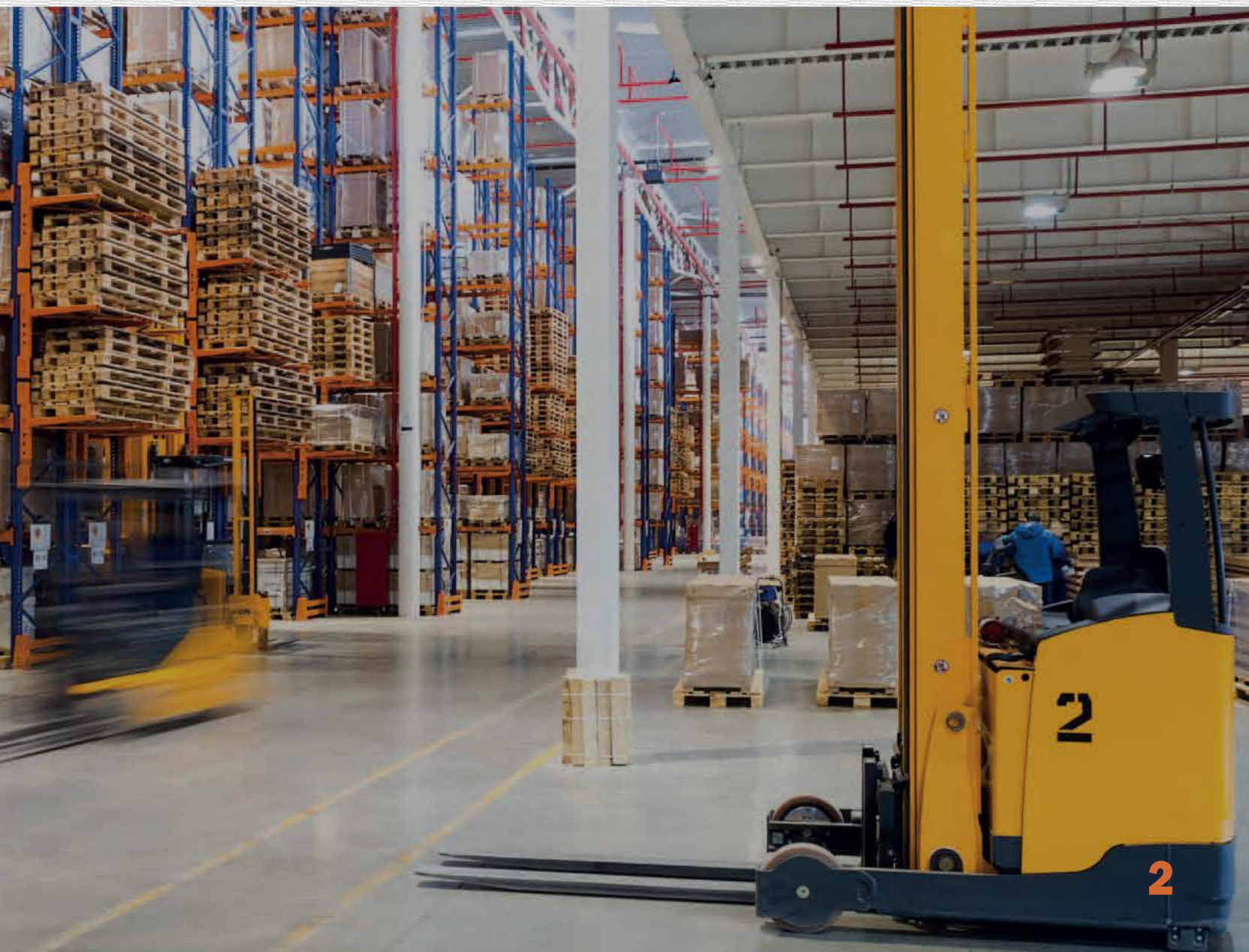
Sustainability is one of the most important criteria today. Equipment that offers high quality and performance is always required for sustainable logistics. FKK serves as an uninterrupted and reliable solution partner for logistics suppliers at this point. To ensure the sustainability of product quality, FKK keeps track of all production parameters by following each phase of production through ERP system. FKK guarantee and customer satisfaction is the highest level in every case with production in compliance with the standards and under control. The way of logistics sustainability passes through meet expectations on time and accurate. It is part of our business to be on the side of our customers which our partners, whom they need. Each product we produce is under our guarantee until meet customers expectations.

Logistics



Customer's Satisfaction

Logistics players will need trusty partners to develop and produce high quality technical wheel solutions that will enable the future of the logistics world. FKK, believes that technical wheel solutions will contribute to the evolution of the logistics. Our mission is to partner with our customers, drive technical wheel solutions that will enable the future of logistic industry to come to life.





Excellent Vulkollan characteristics

Vulkollan is the oldest, best and high-performance polyurethane elastomer ever known.

Vulkollan is made of polyester, diisocyanate (Desmodur 15) and special chain extenders. Raw materials used in this process are selected with the utmost care and subjected to severe quality inspections to guarantee the highest quality possible.

- **Excellent resistance to mechanical wear and tear**
- **High impact dampening capability**
- **High tearing resistance**
- **Low compression set**
- **Resistance to grease, oil and various solutions**
- **Resistance to ozone, UV and other energetic beams**

The polyurethane elastomer is an organic material composed of high molecules and various urethane groups. Vulkollan is manufactured with modern technology. Depending on the desired product characteristics, a rich formula option can optionally be selected. Products in our catalogue are made of V27 type Vulkollan with 92 shA hardness. Where high load bearing capacities are demanded, V30 and V40 are recommended with 94-96 shA hardness.



VULKOLLAN[®]

THE ULTIMATE ELASTOMER

Advantages

- Compared to its rubber equivalents, Vulkollan wheels offer a higher load bearing capacity and more cost-effectiveness.
- Operating temperatures range from -40°C / $+80^{\circ}\text{C}$ and sometimes up to $+110^{\circ}\text{C}$.
- Resistance to hydrocarbons, greases and solvents.
- Quite silent during operation.
- Resistance to friction.
- Longer active lifespan on a smooth surface.
- Resistance to tear.
- Resistance to acids, amines and phenols.
- Its natural colour is yellow, however it is easily affected by daylight and gets darker without any loss in functionality.
- Resistant to ozone.
- This material is particularly recommended for electrical forklifts, heavy-duty machines and friction components.
- Wheels up to a weight of 60 kg can be manufactured of Vulkollan.
- For special orders beyond our product range, we also offer customized designs.
- The load-bearing capacity ranges from 32 kg/cm^2 to 70 kg/cm^2 .



UV
Protection



Ultra
Durable



Silent
Operation

DRIVE WHEELS

DRIVE
WHEELS





Vulk. -Pu. 637.090 - 647.090



D:195 H:70 l:70 d:60 5x11 88



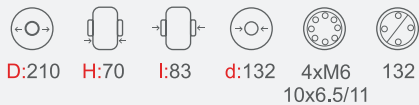
Vulk. -Pu. 637.079 - 647.079



D:213 H:70 d:142,5 6xM6 (HB) 162
3xM6
3x6



Vulk. -Pu. 637.066 - 647.066



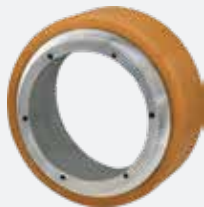
D:210 H:70 l:83 d:132 4xM6 132
10x6.5/11



Vulk. -Pu. 637.001 - 647.001



D:215 H:76 l:89 d:60 5x11 92



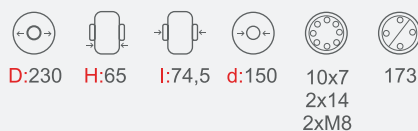
Vulk. -Pu. 637.074 - 647.074



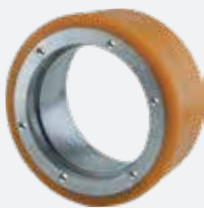
D:210 H:70 l:81,35 d:143 6xM6 153,5



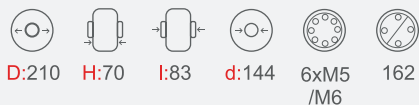
Vulk. -Pu. 637.052 - 647.052



D:230 H:65 l:74,5 d:150 10x7 173
2x14
2xM8



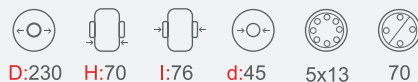
Vulk. -Pu. 637.053 - 647.053



D:210 H:70 l:83 d:144 6xM5 162
/M6



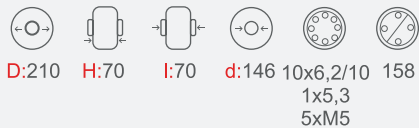
Vulk. -Pu. 637.059 - 647.059



D:230 H:70 l:76 d:45 5x13 70



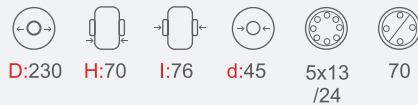
Vulk. -Pu. 637.072 - 647.072



D:210 H:70 l:70 d:146 10x6,2/10 158
1x5,3
5xM5



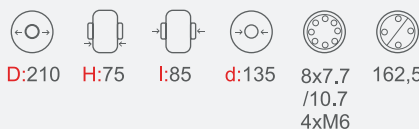
Vulk. -Pu. 637.002 - 647.002



D:230 H:70 l:76 d:45 5x13 70
/24



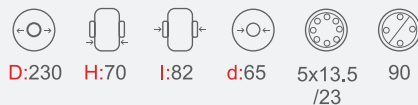
Vulk. -Pu. 637.077 - 647.077



D:210 H:75 l:85 d:135 8x7,7 162,5
/10,7
4xM6



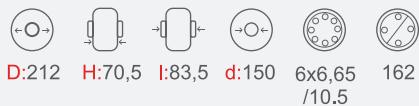
Vulk. -Pu. 637.003 - 647.003



D:230 H:70 l:82 d:65 5x13,5 90
/23



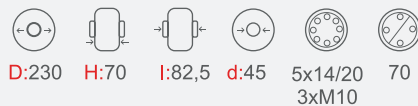
Vulk. -Pu. 637.076 - 647.076



D:212 H:70,5 l:83,5 d:150 6x6,65 162
/10,5



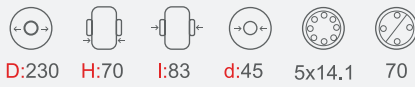
Vulk. -Pu. 637.008 - 647.008



D:230 H:70 l:82,5 d:45 5x14/20 70
3xM10



Vulk. -Pu. 637.062 - 647.062



D:230 H:70 l:83 d:45 5x14.1 70



Vulk. -Pu. 637.011 - 647.011



D:230 H:90 d:65 4x13 95



Vulk. -Pu. 637.080 - 647.080



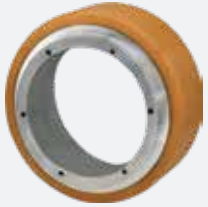
D:215 H:70 l:70 2xM6 162,5
6x6.5
2x6



Vulk. -Pu. 637.006 - 647.006



D:230 H:75 l:84 d:30 5x13 70



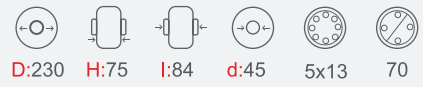
Vulk. -Pu. 637.081 - 647.081



D:215 H:70 l:82 6xM6 153



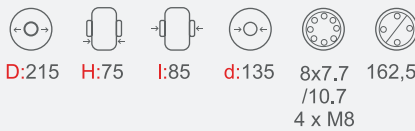
Vulk. -Pu. 637.007 - 647.007



D:230 H:75 l:84 d:45 5x13 70



Vulk. -Pu. 637.071 - 647.071



D:215 H:75 l:85 d:135 8x7.7 162,5
/10.7
4 x M8



Vulk. -Pu. 637.005 - 647.005



D:230 H:75 l:82,5 d:45 5x13/23 70



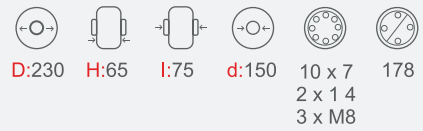
Vulk. -Pu. 637.004 - 647.004



D:230 H:75 d:80 6x14 112



Vulk. -Pu. 637.078 - 647.078



D:230 H:65 l:75 d:150 10 x 7 178
2 x 14
3 x M8



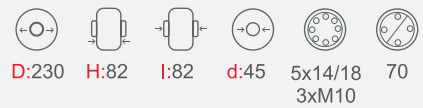
Vulk. -Pu. 637.056 - 647.056



D:230 H:80 d:65 4x14/20 95



Vulk. -Pu. 637.009 - 647.009



D:230 H:82 l:82 d:45 5x14/18 70
3xM10



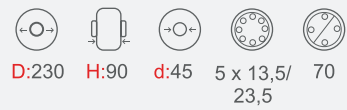
Vulk. -Pu. 637.010 - 647.010



D:230 H:88 d:65 5x13/23 90



Vulk. -Pu. 637.036 - 647.036



D:230 H:90 d:45 5 x 13,5/ 70
23,5



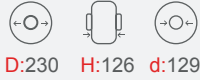
Vulk. -Pu. 637.033 - 647.033



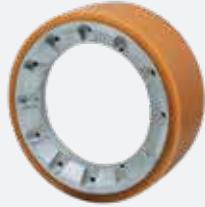
Vulk. -Pu. 637.050 - 647.050



Vulk. -Pu. 637.041 - 647.041



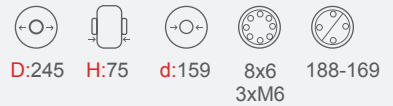
Vulk. -Pu. 637.012 - 647.012



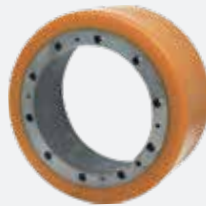
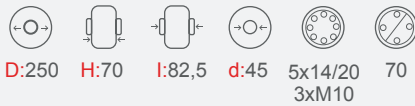
Vulk. -Pu. 637.061 - 647.061



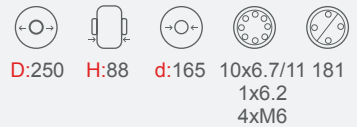
Vulk. -Pu. 637.060 - 647.060



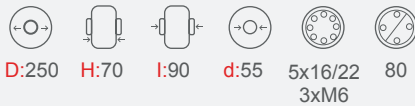
Vulk. -Pu. 637.043 - 647.043



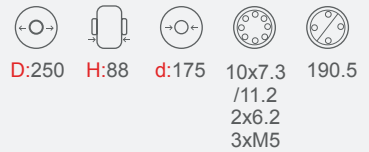
Vulk. -Pu. 637.075 - 647.075



Vulk. -Pu. 637.089 - 647.089



Vulk. -Pu. 637.073 - 647.073



Vulk. -Pu. 637.013 - 647.013



Vulk. -Pu. 637.047 - 647.047



Vulk. -Pu. 637.046 - 647.046



Vulk. -Pu. 637.014 - 647.014





Vulk. -Pu. 637.048 - 647.048



D:250 H:105 d:80 5x16/24 112



Vulk. -Pu. 637.067 - 647.067



D:254 H:125 d:40 5x14.5 90



Vulk. -Pu. 637.070 - 647.070



D:252 H:100 d:80 5x16/23 112



Vulk. -Pu. 637.085 - 647.085



D:305 H:140 d:80 5x16 112



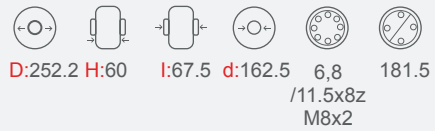
Vulk. -Pu. 637.012 - 647.058



D:250 H:80 d:80 5x15/19 112



Vulk. -Pu. 637.082 - 647.082



D:252.2 H:60 l:67.5 d:162.5 6.8 181.5
/11.5x8z M8x2



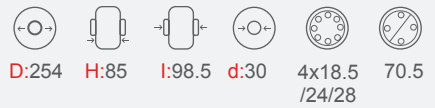
Vulk. -Pu. 637.064 - 647.064



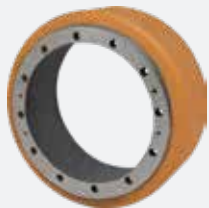
D:250 H:80 l:80 5x18.5/24 112



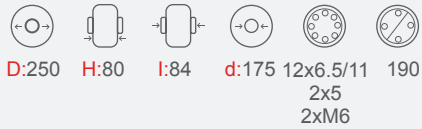
Vulk. -Pu. 637.051 - 647.051



D:254 H:85 l:98.5 d:30 4x18.5/24/28 70.5



Vulk. -Pu. 637.065 - 647.065



D:250 H:80 l:84 d:175 12x6.5/11 2x5 2xM6 190



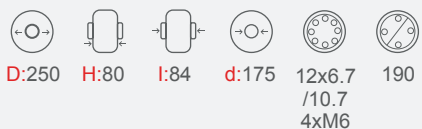
Vulk. -Pu. 637.015 - 647.015



D:254 H:90 d:40 5x15 90



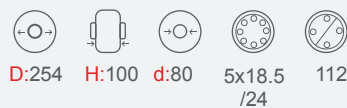
Vulk. -Pu. 637.042 - 647.042



D:250 H:80 l:84 d:175 12x6.7/10.7 4xM6 190



Vulk. -Pu. 637.039 - 647.039



D:254 H:100 d:80 5x18.5/24 112



Vulk. -Pu. 637.057 - 647.057



D:254 H:102 d:45 5x13/23 70



Vulk. -Pu. 637.040 - 647.040



D:310 H:120 d:80 5x16/24 112



Vulk. -Pu. 637.032 - 647.032



D:310 H:120 d:80 7x16/24 112



Vulk. -Pu. 637.019 - 647.019



D:343 H:114 d:90 7x18.5/24 125



Vulk. -Pu. 637.084 - 647.084



D:313 H:125 d:80 5x18.5/24 112



Vulk. -Pu. 637.020 - 647.020



D:343 H:135 d:80 7x15.5/24 112



Vulk. -Pu. 637.049 - 647.049



D:330 H:135 d:80 7x14.5/24 112



Vulk. -Pu. 637.037 - 647.037



D:330 H:140 d:80 7x16/24 112



Vulk. -Pu. 637.038 - 647.038



D:330 H:135 d:80 7x16/24 112



Vulk. -Pu. 637.063 - 647.063



D:330 H:140 d:90 7x16/24 125



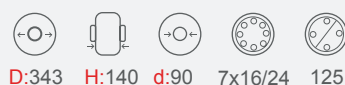
Vulk. -Pu. 637.016 - 647.016



D:343 H:110 d:90 7x18.5 /22.5 125



Vulk. -Pu. 637.083 - 647.083



D:343 H:140 d:90 7x16/24 125



Vulk. -Pu. 637.017 - 647.017



D:343 H:114 d:80 7x18.5/24 112



Vulk. -Pu. 637.024 - 647.024



D:343 H:140 d:90 7x18.5/24 125



Vulk. -Pu. 637.018 - 647.018



D:343 H:114 d:90 7x15 125



Vulk. -Pu. 637.025 - 647.025



D:350 H:127 d:80 7x16/25 112



Vulk. -Pu. 637.054 - 647.054



D:350 H:140 d:80 6x18.5/24 112



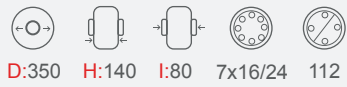
Vulk. -Pu. 637.029 - 647.029



D:400 H:160 d:80 7x16/24 112



Vulk. -Pu. 637.034 - 647.034



D:350 H:140 l:80 7x16/24 112



Vulk. -Pu. 637.028 - 647.028



D:400 H:160 d:110 8x15/24 144.5



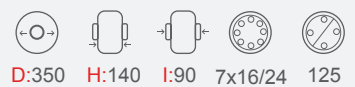
Vulk. -Pu. 637.044 - 647.044



D:343 H:135 d:80 7x18.5/24 112



Vulk. -Pu. 637.027 - 647.027



D:350 H:140 l:90 7x16/24 125



Vulk. -Pu. 637.021 - 647.021



D:343 H:135 d:90 7x15.5/24 125



Vulk. -Pu. 637.069 - 647.069



D:350 H:155 d:90 7x18.5/24 125



Vulk. -Pu. 637.045 - 647.045



D:343 H:135 d:90 7x18.5/24 125



Vulk. -Pu. 637.031 - 647.031



D:360 H:130 d:90 7x18.5/24 125



Vulk. -Pu. 637.022 - 647.022



D:343 H:140 d:80 7x18.5/24 112



Vulk. -Pu. 637.026 - 647.026



D:360 H:140 d:90 7x18.5/24 125



Vulk. -Pu. 637.023 - 647.023



D:343 H:140 d:90 7x15 125



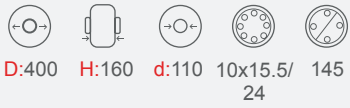
Vulk. -Pu. 637.086 - 647.086



D:360 H:160 d:90 7x18/24 125



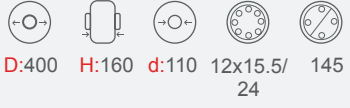
Vulk. -Pu. 637.055 - 647.055



D:400 H:160 d:110 10x15.5/ 145
24



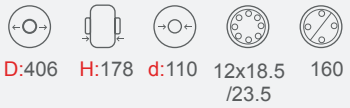
Vulk. -Pu. 637.030 - 647.030



D:400 H:160 d:110 12x15.5/ 145
24



Vulk. -Pu. 637.035 - 647.035



D:406 H:178 d:110 12x18.5 160
/23.5

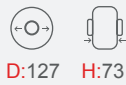
LOAD WHEELS

LOAD
WHEELS





Vulk. -Pu. 635.043 - 645.043



D:127 H:73



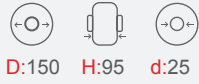
Vulk. -Pu. 635.038 - 645.038



D:227 H:127 d:(90x20)



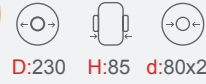
Vulk. -Pu. 635.018 - 645.018



D:150 H:95 d:25



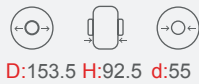
Vulk. -Pu. 635.029 - 645.029



D:230 H:85 d:80x25



Vulk. -Pu. 635.047 - 645.047



D:153.5 H:92.5 d:55



Vulk. -Pu. 635.030 - 645.030



D:230 H:85 d:30



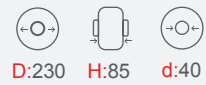
Vulk. -Pu. 635.028 - 645.028



D:180 H:152 l:156 d:40



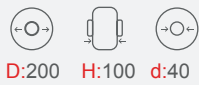
Vulk. -Pu. 635.031 - 645.031



D:230 H:85 d:40



Vulk. -Pu. 635.019 - 645.019



D:200 H:100 d:40



Vulk. -Pu. 635.001 - 645.001



D:250 H:100 d:80x28



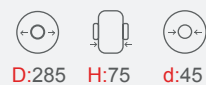
Vulk. -Pu. 635.051 - 645.051



D:200 H:100 d:45



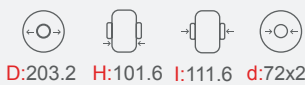
Vulk. -Pu. 635.044 - 645.044



D:285 H:75 d:45



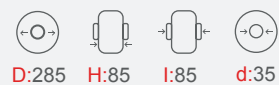
Vulk. -Pu. 635.048 - 645.048



D:203.2 H:101.6 l:111.6 d:72x22



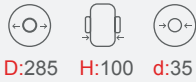
Vulk. -Pu. 635.025 - 645.025



D:285 H:85 l:85 d:35



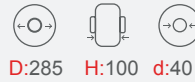
Vulk. -Pu. 635.034 - 645.034



D:285 H:100 d:35



Vulk. -Pu. 635.016 - 645.016



D:285 H:100 d:40



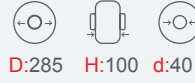
Vulk. -Pu. 635.033 - 645.033



D:285 H:100 d:37



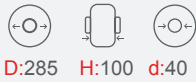
Vulk. -Pu. 635.017 - 645.017



D:285 H:100 d:40



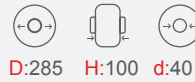
Vulk. -Pu. 635.002 - 645.002



D:285 H:100 d:40



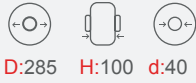
Vulk. -Pu. 635.049 - 645.049



D:285 H:100 d:40



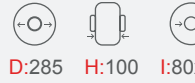
Vulk. -Pu. 635.004 - 645.004



D:285 H:100 d:40



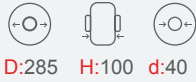
Vulk. -Pu. 635.027 - 645.027



D:285 H:100 l:80x28



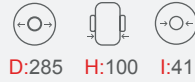
Vulk. -Pu. 635.005 - 645.005



D:285 H:100 d:40



Vulk. -Pu. 635.003 - 645.003



D:285 H:100 l:41



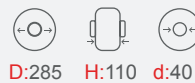
Vulk. -Pu. 635.006 - 645.006



D:285 H:100 d:40



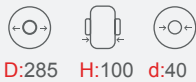
Vulk. -Pu. 635.036 - 645.036



D:285 H:110 d:40



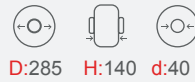
Vulk. -Pu. 635.007 - 645.007



D:285 H:100 d:40



Vulk. -Pu. 635.040 - 645.040



D:285 H:140 d:40



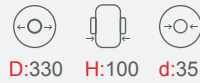
Vulk. -Pu. 635.032 - 645.032



D:300 H:100 L:113 d:40



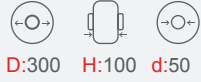
Vulk. -Pu. 635.035 - 645.035



D:330 H:100 d:35



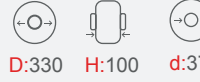
Vulk. -Pu. 635.014 - 645.014



D:300 H:100 d:50



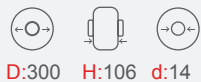
Vulk. -Pu. 635.022 - 645.022



D:330 H:100 d:37



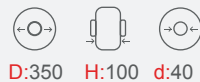
Vulk. -Pu. 635.013 - 645.013



D:300 H:106 d:14



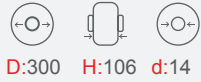
Vulk. -Pu. 635.024 - 645.024



D:350 H:100 d:40



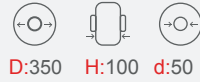
Vulk. -Pu. 635.039 - 645.039



D:300 H:106 d:14



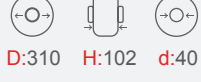
Vulk. -Pu. 635.009 - 645.009



D:350 H:100 d:50



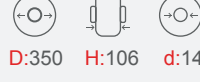
Vulk. -Pu. 635.008 - 645.008



D:310 H:102 d:40



Vulk. -Pu. 635.021 - 645.021



D:350 H:106 d:14



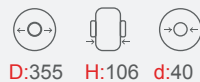
Vulk. -Pu. 635.020 - 645.020



D:310 H:102 d:40



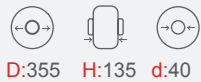
Vulk. -Pu. 635.010 - 645.010



D:355 H:106 d:40



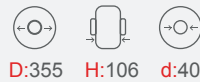
Vulk. -Pu. 635.011 - 645.011



D:355 H:135 d:40



Vulk. -Pu. 635.015 - 645.015



D:355 H:106 d:40



Vulk. -Pu. 635.012 - 645.012



D:355 H:135 d:40

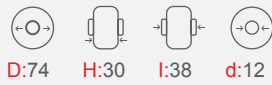
STABILISING WHEELS

STABILISING WHEELS





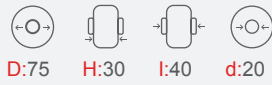
Vulk. -Pu. 633.071 - 643.071



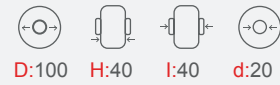
Vulk. -Pu. 633.067 - 643.067



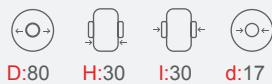
Vulk. -Pu. 633.072 - 643.072



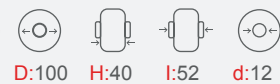
Vulk. -Pu. 633.002 - 643.002



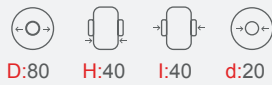
Vulk. -Pu. 633.057 - 643.057



Vulk. -Pu. 633.052 - 643.052



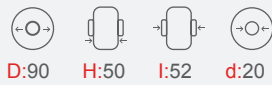
Vulk. -Pu. 633.059 - 643.059



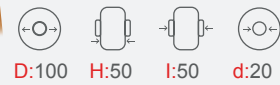
Vulk. -Pu. 633.058 - 643.058



Vulk. -Pu. 633.055 - 643.055



Vulk. -Pu. 633.069 - 643.069



Vulk. -Pu. 633.061 - 643.061



Vulk. -Pu. 633.056 - 643.056



Vulk. -Pu. 633.001 - 643.001

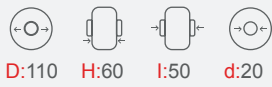


Vulk. -Pu. 633.062 - 643.062





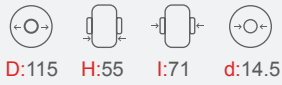
Vulk. -Pu. 633.064 - 643.064



Vulk. -Pu. 633.005 - 643.005



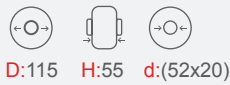
Vulk. -Pu. 633.063 - 637.063



Vulk. -Pu. 633.006 - 643.006



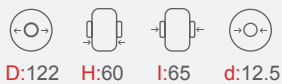
Vulk. -Pu. 633.048 - 643.048



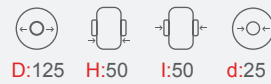
Vulk. -Pu. 633.007 - 643.007



Vulk. -Pu. 633.016 - 643.016



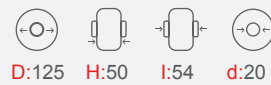
Vulk. -Pu. 633.008 - 643.008



Vulk. -Pu. 633.070 - 643.070



Vulk. -Pu. 633.009 - 643.009



Vulk. -Pu. 633.003 - 643.003



Vulk. -Pu. 633.047 - 643.047



Vulk. -Pu. 633.004 - 643.004



Vulk. -Pu. 633.010 - 643.010



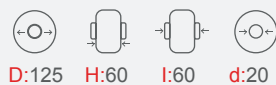
STABILISING WHEELS



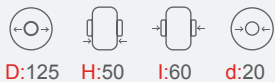
Vulk. -Pu. 633.041 - 643.041



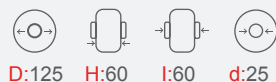
Vulk. -Pu. 633.014 - 643.014



Vulk. -Pu. 633.037 - 643.037



Vulk. -Pu. 633.015 - 643.015



Vulk. -Pu. 633.051 - 643.051



Vulk. -Pu. 633.017 - 643.017



Vulk. -Pu. 633.011 - 643.011



Vulk. -Pu. 633.032 - 643.032



Vulk. -Pu. 633.038 - 643.038



Vulk. -Pu. 633.020 - 643.020



Vulk. -Pu. 633.012 - 643.012



Vulk. -Pu. 633.019 - 643.019



Vulk. -Pu. 633.013 - 643.013



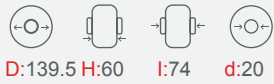
Vulk. -Pu. 633.065 - 643.065



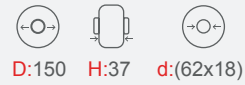
STABILISING WHEELS



Vulk. -Pu. 633.021 - 643.021



Vulk. -Pu. 633.035 - 643.035



Vulk. -Pu. 633.066 - 643.066



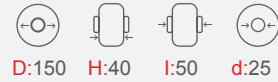
Vulk. -Pu. 633.031 - 643.031



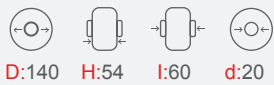
Vulk. -Pu. 633.036 - 643.036



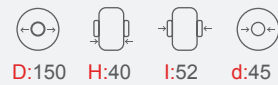
Vulk. -Pu. 633.050 - 643.050



Vulk. -Pu. 633.018 - 643.018



Vulk. -Pu. 633.033 - 643.033



Vulk. -Pu. 633.039 - 643.039



Vulk. -Pu. 633.046 - 643.046



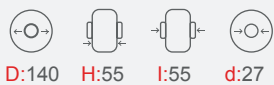
Vulk. -Pu. 633.042 - 643.042



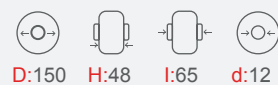
Vulk. -Pu. 633.044 - 643.044



Vulk. -Pu. 633.068 - 643.068



Vulk. -Pu. 633.022 - 643.022



STABILISING WHEELS



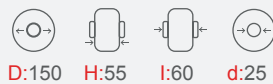
Vulk. -Pu. 633.022-C - 643.022-C



D:150 H:48 l:67 d:12



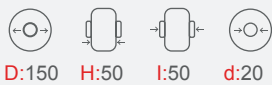
Vulk. -Pu. 633.026 - 643.026



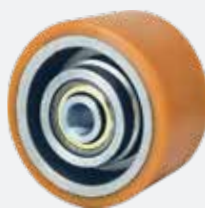
D:150 H:55 l:60 d:25



Vulk. -Pu. 633.043 - 643.043



D:150 H:50 l:50 d:20



Vulk. -Pu. 633.029 - 643.029



D:150 H:76 l:84 d:25



Vulk. -Pu. 633.073 - 643.073



D:150 H:50 l:50 d:25



Vulk. -Pu. 633.030 - 643.030



D:150 H:78 l:79 d:30



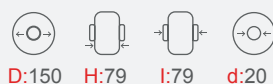
Vulk. -Pu. 633.023 - 643.023



D:150 H:50 l:60 d:20



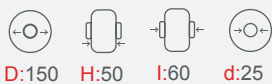
Vulk. -Pu. 633.034 - 643.034



D:150 H:79 l:79 d:20



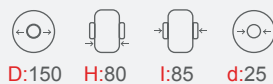
Vulk. -Pu. 633.024 - 643.024



D:150 H:50 l:60 d:25



Vulk. -Pu. 633.049 - 643.049



D:150 H:80 l:85 d:25



Vulk. -Pu. 633.025 - 643.025



D:150 H:54 l:60 d:20



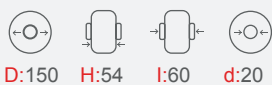
Vulk. -Pu. 633.053 - 643.053



D:156 H:40 l:40 d:35



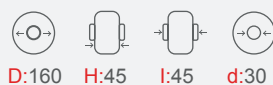
Vulk. -Pu. 633.040 - 643.040



D:150 H:54 l:60 d:20



Vulk. -Pu. 633.027 - 643.027



D:160 H:45 l:45 d:30



Vulk. -Pu. 633.074 - 643.074



D:160 H:55 l:55 d:27



Vulk. -Pu. 633.028 - 643.028



D:180 H:65 l:75 d:25



Vulk. -Pu. 633.054 - 643.054



D:200 H:55 l:60 d:39



Vulk. -Pu. 633.060 - 643.060



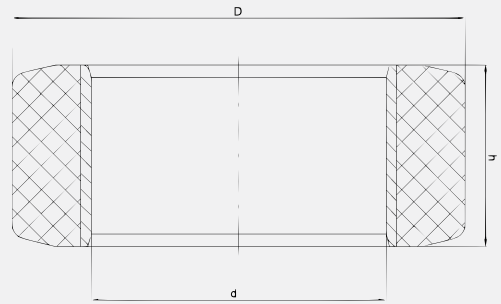
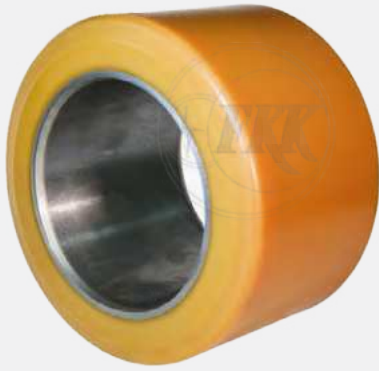
D:216 H:68 l:78

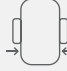

STABILISING WHEELS



PRESS ON BAND

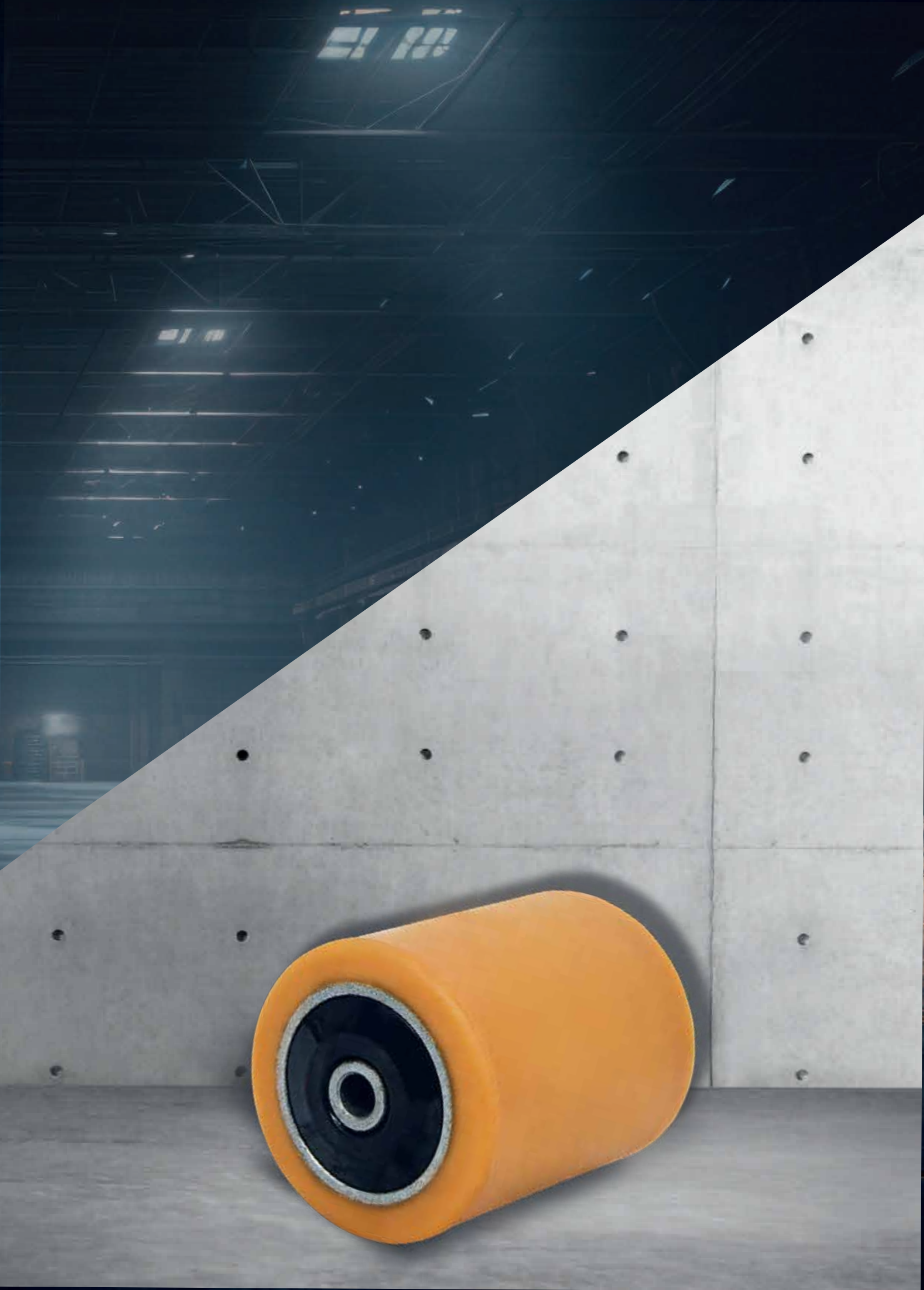
PRESS ON BAND

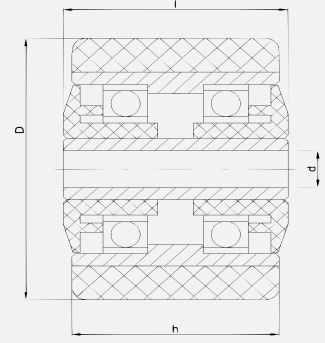



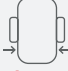
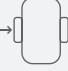

FKK Ref.	 Inch / D(mm)	 h(mm)	 d(mm)
646.001	13,77 (350 mm)	5,50 (140 mm)	10,61 (269,7 mm)
646.002	6,00 (152,4mm)	3,00 (76,2 mm)	4,00 (101,6 mm)
646.025	8,00 (203,2mm)	4,50 (114,3 mm)	4,50 (114,3 mm)
646.003	8,50 (215,9mm)	4,00 (101,6 mm)	4,00 (101,6 mm)
646.026	9,00 (228,6mm)	5,00 (127 mm)	5,00 (127 mm)
646.027	9,00 (228,6mm)	5,00 (127 mm)	5,75 (146,05 mm)
646.004	9,00 (228,6mm)	7,00 (177,8 mm)	6,25 (158,75 mm)
646.005	10,00 (254,0mm)	6,00 (152,4 mm)	6,25 (158,75 mm)
646.006	10,00 (254,0mm)	7,00 (177,8 mm)	6,25 (158,75 mm)
646.008	10,00 (254,0mm)	4,00 (101,6 mm)	6,50 (165,1 mm)
646.007	10,00 (254,0mm)	4,75 (120,65 mm)	6,50 (165,1 mm)
646.009	10,00 (254,0mm)	5,00 (127 mm)	6,50 (165,1 mm)
646.010	10,00 (254,0mm)	6,00 (152,4 mm)	6,50 (165,1 mm)
646.011	12,00 (304,8mm)	4,50 (114,3 mm)	8,00 (203,2 mm)
646.013	12,00 (304,8mm)	5,00 (127 mm)	8,00 (203,2 mm)
646.018	12,00 (304,8mm)	5,00 (127 mm)	9,00 (228,6 mm)
646.012	12,00 (304,8mm)	5,50 (139,7 mm)	8,00 (203,2 mm)
646.014	13,00 (330,2mm)	4,50 (114,3 mm)	8,00 (203,2 mm)
646.019	13,00 (330,2mm)	4,50 (114,3 mm)	9,00 (228,6 mm)
646.015	13,00 (330,2mm)	5,50 (139,7 mm)	8,00 (203,2 mm)
646.028	13,00 (330,2mm)	5,50 (139,7 mm)	9,50 (241,3 mm)
646.016	13,50 (342,9mm)	5,50 (139,7 mm)	8,00 (203,2 mm)
646.020	13,50 (342,9mm)	5,50 (139,7 mm)	10,00 (254,0 mm)
646.017	13,50 (342,9mm)	6,00 (152,4 mm)	8,00 (203,2 mm)
646.021	13,50 (342,9mm)	6,00 (152,4 mm)	10,00 (254,0 mm)
646.023	13,50 (342,9mm)	6,00 (152,4 mm)	10,50 (266,7 mm)
646.022	13,50 (342,9mm)	7,00 (177,8 mm)	10,00 (254,0 mm)
646.029	14,00 (355,6mm)	8,00 (203,2 mm)	11,25 (285,75 mm)
646.030	15,00 (381,0mm)	6,00 (152,4 mm)	11,75 (298,45 mm)
646.024	16,00 (406,4mm)	7,00 (177,8 mm)	10,50 (266,7 mm)

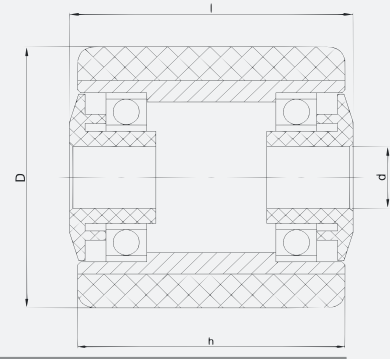
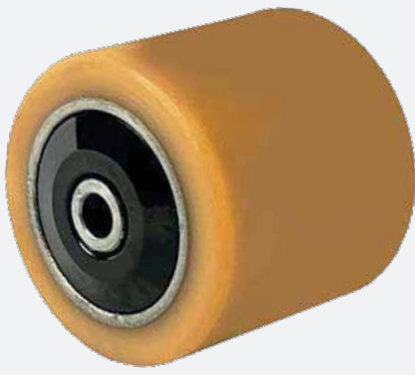
ROLLER PLASTIC CAP


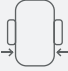
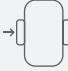

ROLLER PLASTIC CAP



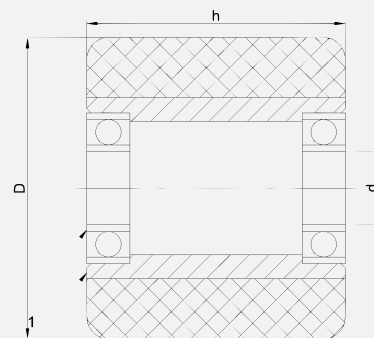






Vulkollan Ref.	Polyurethane Ref.	 D(mm)	 h(mm)	 l(mm)	 d(mm)
631.055	641.055	82	70	75	20
631.067	641.067	82	100	105	20
631.003	641.003	85	45	45	20
631.078	641.078	85	55	60	20
631.005	641.005	85	60	65	20
631.006	641.006	85	60	65	25
631.007	641.007	85	65	70	20
631.008	641.008	85	65	70	25
631.011	641.011	85	70	75	20
631.012	641.012	85	70	75	25
631.014	641.014	85	73	78	20
631.017	641.017	85	75	80	25
631.070	641.070	85	75	80	20
631.019	641.019	85	80	82	17
631.020	641.020	85	80	85	20
631.021	641.021	85	80	85	25
631.024	641.024	85	82	85	25
631.023	641.023	85	82	87	20
631.027	641.027	85	85	90	20
631.028	641.028	85	85	90	25
631.062	641.062	85	90	82	20
631.031	641.031	85	90	95	20
631.032	641.032	85	90	95	25
631.034	641.034	85	95	97	20
631.053	641.053	85	95	97	25
631.035	641.035	85	95	100	25
631.056	641.056	85	95	100	20
631.048	641.048	85	100	102	25
631.049	641.049	85	100	102	20
631.038	641.038	85	100	105	20
631.039	641.039	85	100	105	25
631.041	641.041	85	105	110	20
631.042	641.042	85	105	110	25
631.045	641.045	85	110	115	20
631.046	641.046	85	110	115	25
631.069	641.069	85	2x42	89	25
631.096	641.096	85	3x55	165	25
631.064	641.064	90	109	111	25
631.054	641.054	100	73	78	20



Vulkollan Ref.	Polyurethane Ref.	 D(m m)	 h(mm)	 l(mm)	 d(mm)
631.061	641.061	50	70		(35 x 20)
631.063	641.063	77	70	75	12,5
631.083	641.083	80	65	67	12
631.060	641.060	80	65	70	12
631.074	641.074	83	165		(52 x 45)
631.076	641.076	83	165		(52 x 36,6)
631.072	641.072	85	41		55
631.058	641.058	85	60	62	17
631.004	641.004	85	60	65	12
631.095	641.095	85	60	65	17
631.047	641.047	85	65	70	17
631.075	641.075	85	65	70	12
631.066	641.066	85	70	63	17
631.081	641.081	85 85	70 80	73 80	12 25
631.093	641.093	85 85	70 84	75 84	12 20
631.010	641.010	85	70	75	17
631.013	641.013	85	73	78	13
631.015	641.015	85	74	76	13
631.016	641.016	85	74	76	17
631.051	641.051	85	75	77	17
631.080	641.080	85	75	80	12
631.098	641.098	85	80	82	12
631.018	641.018	85	80	85	12
631.022	641.022	85	82	87	17
631.025	641.025	85	85	90	12
631.026	641.026	85	85	90	17
631.029	641.029	85	90	95	12
631.030	641.030	85	90	95	17
631.091	641.091	85	95	97	17
631.033	641.033	85	95	100	17
631.050	641.050	85	100	102	17
631.036	641.036	85	100	105	12
631.037	641.037	85	100	105	17
631.077	641.077	85	100	105	25---bush'ng
631.040	641.040	85	105	110	12
631.043	641.043	85	110	115	12
631.044	641.044	85	110	115	17
631.071	641.071	90	50		(47 x 14)
631.059	641.059	90	88	92	12,5
631.084	641.084	90	95	97	12
631.052	641.052	90	100	104	12
631.085	641.085	127	73		(62 x 20)
631.086	641.086	127	98		(62 x 17)
631.087	641.087	152	98		(80 x 21)

ROLLER PLASTIC CAP

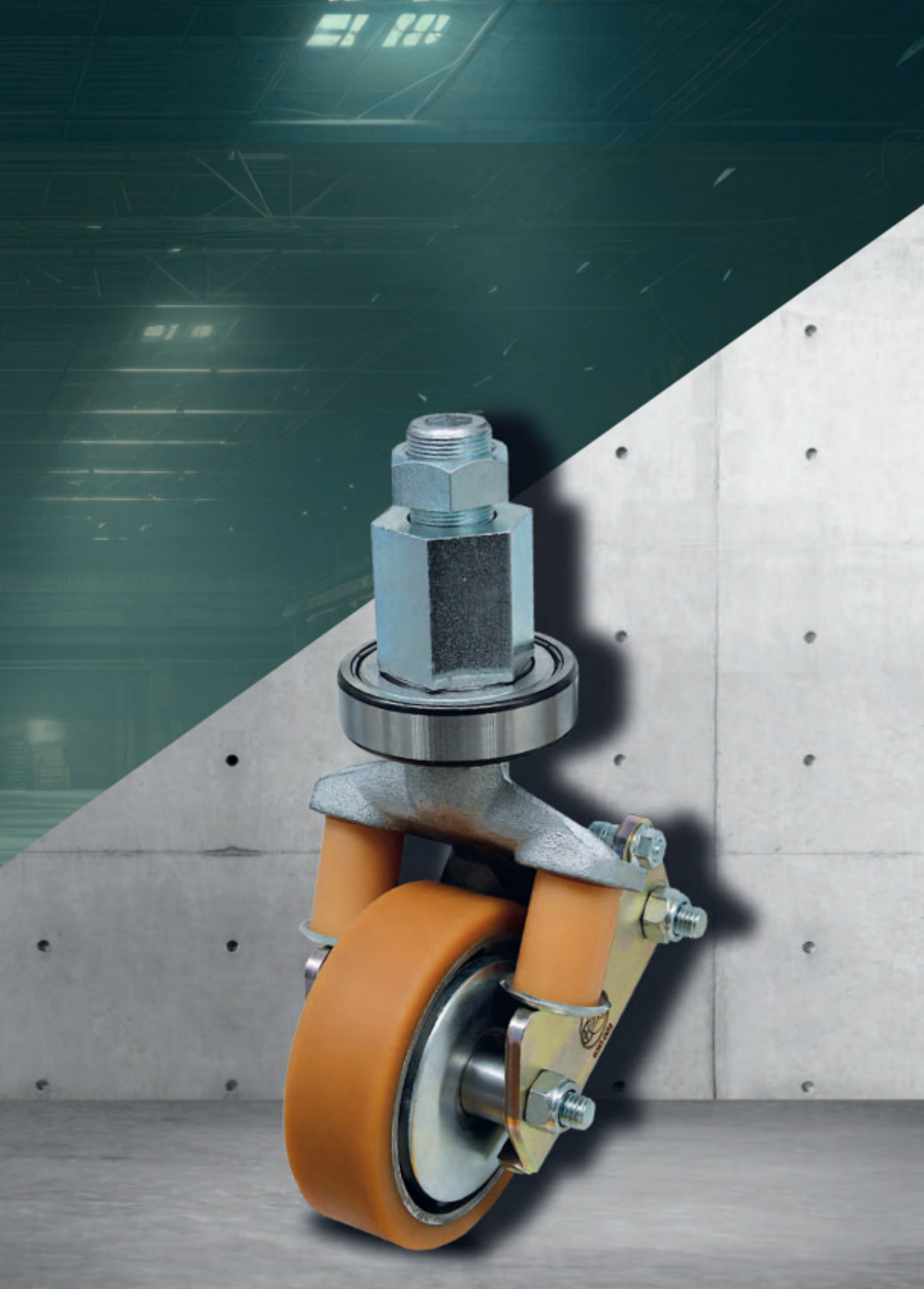


Vulkollan Ref.	Polyurethane Ref.	 D(mm)	 h(mm)	 l(mm)	 d(mm)
631.001	641.001	70	60	60	17
631.002	641.002	70	60	60	20
631.092	641.092	70	70	70	15
631.114	641.114	78	78	80	47x14
631.068	641.068	74	48	48	20
631.099	641.099	80	90	90	20
631.065	641.065	82	60	60	20
631.079	641.079	82	70	70	20
631.082	641.082	82	90	90	20
631.088	641.088	83	165	165	25
631.089	641.089	85	90	90	20
631.090	641.090	85	75	75	20
631.073	641.073	85	70	70	20
631.081	641.081	85	80	80	25
631.093	641.093	85	84	84	20



STABILISING WHEEL ASSEMBLY

STABILISING WHEEL ASSEMBLY





650.001
11524505505



650.003
4401514





650.005
51077213



650.007
7611200 / 7593193



650.008
244316 / 136135 / 7647304





650.010
4475633



650.011
27637030

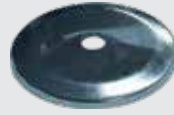




650.012
810974100



643.018



229.007



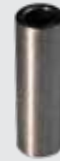
211.032



233.815



212.014



241.089



217.038



650.013
3794505500



650.018



643.022



229.008



233.815



211.032



650.014
50030256



650.019
3604505500





650.020
4006485



233.827



643.067



229.214



233.828



233.825



211.025



275.902



212.005



650.021
805888001



233.831



233.832



643.055



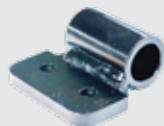
275.905



233.835



233.836



233.837



650.022
172107



650.026
7501588



650.028
3724505588





650.029
45374505502



233.858



229.237



241.109



233.876



241.110



650.030
50024505511



229.228



211.009



241.043



650.023
656112 - Right



650.024
656112 - Left



650.025
61598501107



650.027



LOAD WHEEL ASSEMBLY

LOAD WHEEL ASSEMBLY





650.501
50307935



650.401



212.501



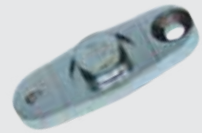
212.502



641.025



212.063



650.602



650.502
7522959-7592114



650.402



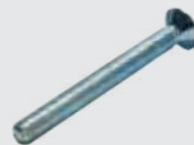
212.508



212.505



641.015



212.170



650.603



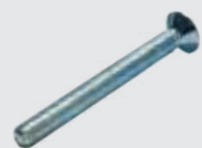
650.503
261271-7591742-132523



650.403



212.507



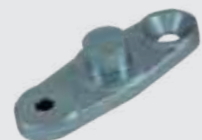
212.170



641.015



212.504



650.603



650.504
51072532-51011104



650.406



212.505



212.511



641.025



212.063



650.601



650.505
1318501136



650.407



212.503



212.513



641.018



212.516



218.214



233.822



233.823



212.076



650.604



650.506
51055143-51059722



650.408



212.505



233.834



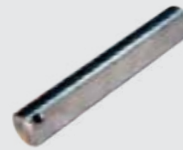
641.046



650.507
826702-003



650.409



233.841



212.503



641.046



650.508
2770656-580013311



650.405



233.843



233.842



641.047



650.510
1318501108



650.410



641.025



650.511
50028501142



650.411



641.048



650.512
4493059



650.412



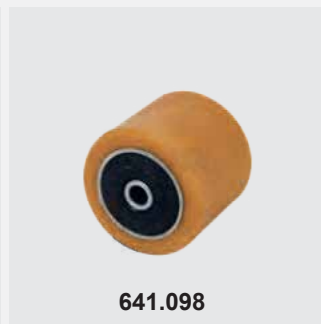
641.049



650.514
50018501118



650.414



641.098



650.515
508098510050



650.415



641.034



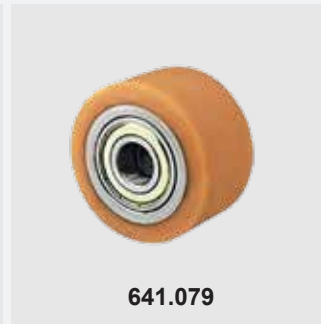
233.871



650.516
508098510049



650.415



641.079



233.870



650.606



650.517



650.416



641.046



233.834



650.518



650.417



641.025



212.063



650.609



650.519



650.418



641.050z



233.873

SPARE PARTS

SPARE PARTS





FKK Ref.	Bearing Code	Inside Dia.	Outside Dia.	Height
211.001	6006	Ø30	Ø55	13
211.002	6303	Ø17	Ø47	14
211.003	6002	Ø15	Ø32	9
211.004	6304	Ø20	Ø52	15
211.005	6012	Ø60	Ø95	18
211.006	6308	Ø40	Ø90	23
211.007	6202	Ø15	Ø35	11
211.008	JRM 4068	Ø40	Ø68	42
211.009	6204	Ø20	Ø47	14
211.010	6005	Ø25	Ø47	12
211.011	6003	Ø17	Ø35	10
211.012	6205	Ø25	Ø52	15
211.013	BTH 1024 C	Ø40	Ø73	55
211.014	6004	Ø20	Ø42	12
211.015	BT1B 328053 AB/Q	Ø41	Ø68	14,5
211.016	6210	Ø50	Ø90	20
211.017	6305	Ø25	Ø62	17
211.018	6208	Ø40	Ø80	18
211.019	309946 AC	Ø37	Ø74	45
211.020	6310	Ø50	Ø110	27
211.021	6206	Ø30	Ø62	16
211.022	6209	Ø45	Ø85	19
211.023	6211	Ø55	Ø100	21
211.024	62804	Ø20	Ø32	8
211.025	6207	Ø35	Ø72	17
211.026	NA 4909	Ø45	Ø68	22
211.027	32007	Ø35	Ø62	14
211.028	61907	Ø35	Ø55	10
211.029	3205	Ø25	Ø52	20,6
211.030	51110	Ø50	Ø70	14
211.031	32004-X	Ø20	Ø42	15
211.032	JRM 3968	Ø39	Ø68	37
211.033	6307	Ø35	Ø80	21
211.034	BA2B633313C	Ø30	Ø60	37
211.035	6301	Ø12	Ø37	12
211.036	32010-X	Ø50	Ø80	20
211.037	32008-X-XL	Ø40	Ø68	19
211.038	DAC 39720037	Ø39	Ø72	37
211.039	62205	Ø25	Ø52	18
211.040	22208 CC	Ø40	Ø80	23
211.041	32006 JR	Ø30	Ø55	17
211.052	30205	Ø25	Ø52	16,25
211.053	51112	Ø60	Ø85	17
211.044	6007 2Z	Ø35	Ø62	14
211.059	7208 AC	Ø40	Ø80	18



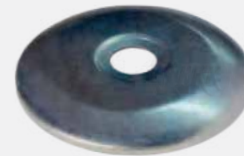
STEEL CAP
FKK Ref. : 229.001
Outside Diameter : 86,8
Inside Diameter : 20,2
Height : 8,35



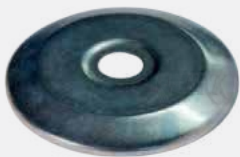
STEEL CAP
FKK Ref. : 229.008
Outside Diameter : 104
Inside Diameter : 12,5
Height : 11/10



STEEL CAP
FKK Ref. : 229.005
Outside Diameter : 86,8
Inside Diameter : 12,1
Height : 8,35



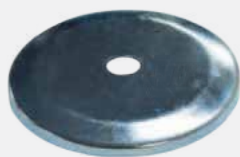
STEEL CAP
FKK Ref. : 229.009
Outside Diameter : 104
Inside Diameter : 20
Height : 10,7/8



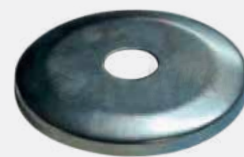
STEEL CAP
FKK Ref. : 229.006
Outside Diameter : 82
Inside Diameter : 15,2
Height : 7,2/5



STEEL CAP
FKK Ref. : 229.011
Outside Diameter : 64
Inside Diameter : 15,2
Height : 10,3/9,3



STEEL CAP
FKK Ref. : 229.007
Outside Diameter : 86,8
Inside Diameter : 12,1
Height : 8,35



STEEL CAP
FKK Ref. : 229.013
Outside Diameter : 86,8
Inside Diameter : 15
Height : 8,35



212.501	Ø30 x Ø25 x 23 mm	composite bushing
212.503	Ø23 x Ø20 x 15 mm	composite bushing
212.504	Ø28 x Ø25 x 15 mm	composite bushing
212.505	Ø23 x Ø20 x 30	bushing
212.507	Ø23 x Ø20 x 10 mm	composite bushing
212.508	Ø28 x Ø25 x 10 mm	bushing
212.511	Ø38 x Ø35 x Ø30,6 x 14,15 mm	composite bushing
212.512	Ø24 x Ø20,3 x 24,5 mm	composite bushing
212.513	Ø30 x Ø25 x 15 mm	composite bushing
212.516	Ø23*Ø20*20 mm	composite bushing
212.517	Ø35,85 x Ø20,20 x 1,5 mm	composite bushing



GAS SPRING

GAS SPRING





671.001

400N
51152718



671.002

440N
50101900



671.003

1300N
4473022



671.004

500N
51129641



671.005

450N
51438748



671.006

450N
4482725



671.007

330N
4468675



671.008

1000N
926377



671.009

350N
4413911



671.010

365N
50032564



671.011

250N
51150463



671.012

400N
4475027



671.013

450N
4483277



671.014

1300N
0009655633



671.015

500N
50056885



671.016

350N
77800019



671.017

285N
50040817



671.018

810N
122314-088



671.019

1000N
252749



671.020

450N
27331910



671.021

810N
200250-810



671.022

500N
210122-500



671.023

1300N
0009655547



671.024

500N
50460924



671.025

600N
238864-600



671.026

70N
7569855



671.027

300N
254287



671.028

400N
210121400



671.029

1100N
0009655548



671.030

800N
BAOLI



671.034

200N
51293555



671.035

60N
7577717



671.036

600N
0009655733



671.037

350N
143224



671.039

1150N
0009655642



671.041

700N
Y020/50-177

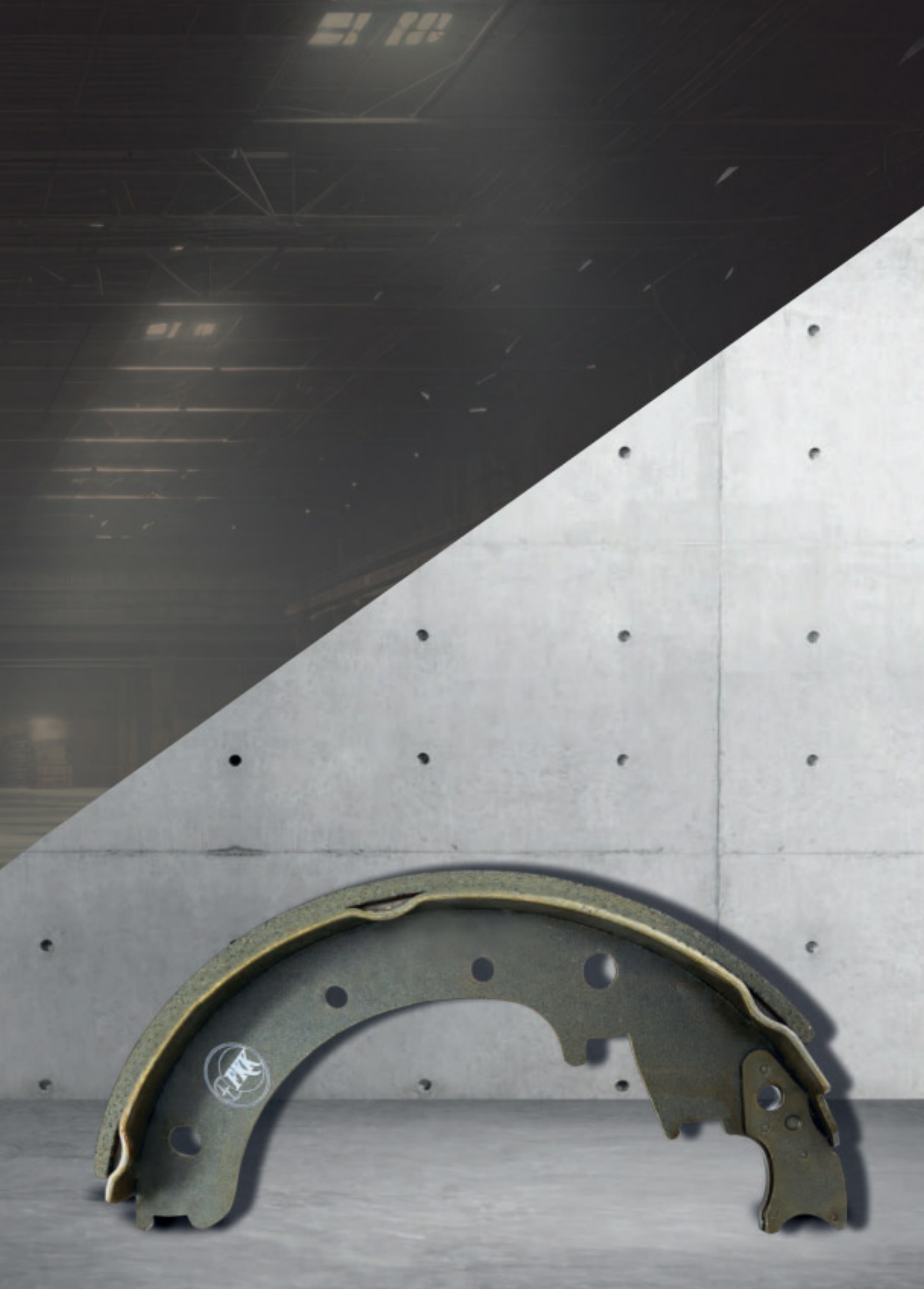


671.042

280N
51300026-
51192022

BRAKE SHOES

BRAKE SHOES





661.001

FL 1001

LIUGONG - FED POWERTD 27 - **HELI** 3 TONNE - **G.POWER** 2.5 TONNE - **TCM Z5** 3 TONNE - **TCM T9** 4.5 TONNE - **BAOLI** 3 TONNE



661.002

FL 1007

KOMATSU T 12 /14 - JUNGHEINRICH FD 25 / 30 - **NISSAN** 3 TONNE - **TAILIFT** 2.5 / 3 TONNE - **STILL RC** 40 /30 / 25 - **CAT DP** 2.5 TONNE - **G.POWER** 3 TONNE



661.003

FL 1014

HELI N2.5 TONNE - **BAOLI** 2.5 TONNE - **DAEWOO GX** 2.5 TONNE - **TCM T6** 2.5 / 3 TONNE - **TOYOTA FD** 25 / 30 - **TCM** 2.5 TONNE - **G. POWER - TOYOTA**



661.004

FL 1024

HYSTER VX - TCM T3Z 3 TONNE - **KOMATSU T16 - CAT C 30L** 3 TONNE - **CLARK** 3 TONNE



661.005

FL 1003

HELI 1.5 TONNE - **HYUNDAI** 1.8 TONNE - **TOYOTA** 1.8 TONNE - **DAEWOO** 1.8 TONNE - **BAOLI** 1.8 TONNE - **NISSAN** 1.8 TONNE - **JUNGHEINRICH** 1.8 TONNE - **TCM** 1.8 TONNE



661.006
FL 1006

**HYSTER YALE 2.5 / 3 TONNE -
KOMATSU NT11 3 TONNE**



661.007
FL 1008

**KOMATSU FD40 Z4-Z5 - TOYOTA 4
TONNE - CAT 4 TONNE - KOMATSU T16
3.5 TONNE**



661.009
FL 1015

**YALE VX 1.8 TONNE - KOMATSU FD 15 -
HYSTER FORTENS 1.8 TONNE**



661.010
FL 1016

**HYSTER 1.8 TONNE - YALE 1.8 TONNE -
KOMATSU 1.8 TONNE**



661.012
FL 1026

DAEWOO EKO - HYUNDAI 30 - 5/30 - 2

BATTERY SOCKETS

BATTERY SOCKETS



+ -
320A
IP23
max. 160V/DC

320A
IP23
max. 160V/DC



FKK Code: **680.001**
80 AH - 35 mm²
BATTERY SOCKET



FKK Code: **680.003**
160 AH - 50 mm²
BATTERY SOCKET



FKK Code: **680.007**
160 AH - 70 mm²
BATTERY SOCKET



FKK Code: **680.015**
320 AH - 50 mm²
BATTERY SOCKET



FKK Code: **680.005**
320 AH - 70 mm²
BATTERY SOCKET





FKK Code: **680.002**
80 AH - 35 mm²
BATTERY SOCKET



FKK Code: **680.004**
160 AH - 50 mm²
BATTERY SOCKET



FKK Code: **680.008**
160 AH - 70 mm²
BATTERY SOCKET



FKK Code: **680.016**
320 AH - 50 mm²
BATTERY SOCKET



FKK Code: **680.006**
320 AH - 70 mm²
BATTERY SOCKET





**FKK GÜNEY OTO LASTİK
TAKOZ SAN. TİC. A.Ş.**

**Istanbul - TÜRKİYE
fkk@fkk.com.tr
www.fkk.com.tr**



FKK ERSATZTEILE GmbH

**Duren - DEUTSCHLAND
fkkde@fkkde.com
www.fkkde.com**



FKK USA LLC

**Atlanta GE - USA
fkkusa@fkkusa.com
www.fkkusa.com**